



ACON Laboratories, Inc.
10125 Mesa Rim Road,
San Diego, CA 92121, USA

EC REP
MDSS GmbH
Schiffgraben 41
30175 Hannover, Germany

© 2011 ACON Laboratories, Inc.



Number: 1150565202
Effective date: 2011-xx-xx

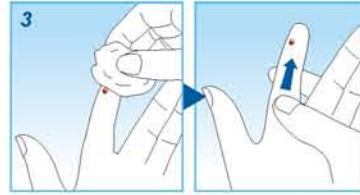
Apply the Specimen

The meter will flash the blood drop symbol.

1. Ensure the hand is warm, relaxed and has good circulation. Disinfect the puncture site.
Note: To obtain results similar to venous blood, the hand must be warm and relaxed to increase capillary blood flow.



2. Puncture the fingertip.
3. Wipe away the first drop of blood. Apply light pressure to obtain a second drop of blood.
Note: For accurate results, do not use the first drop of blood as this may contain more tissue fluid.



4. Collect 10 µL using a Capillary Transfer Tube, and apply the specimen to the center of the Specimen Application Area on the test strip.



- Note:**
- Do not touch the Specimen Application Area with the Capillary Transfer Tube.
 - Apply the specimen with the strip inserted into the meter after the meter flashes the blood drop symbol. Do not remove the test strip from the meter to apply the specimen.
 - Only use a 10 µL Capillary Transfer Tube or Pipette. Applying more than 10 µL of specimen can lead to inaccurate results.

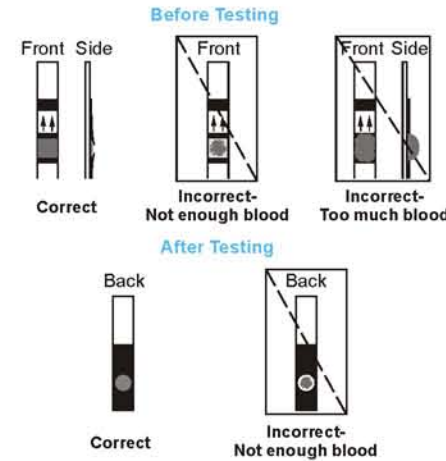
5

Specimen Application

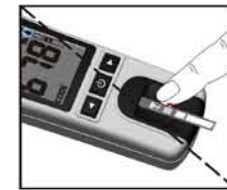
For best results, fill the Specimen Application Area with 10 µL of blood specimen. Incorrect results may occur if the specimen is not applied correctly, or if the Specimen Application Area is not filled.

Note:

- Do not add more blood to the test strip if the specimen applied to the Specimen Application Area is not enough. Discard the used strip and retest for accurate results.



- Do not apply specimen directly from the finger.



6

Precautions

- Test venous specimens **within 8 hours** of collection. Test capillary blood immediately if no anticoagulant is used.
Note: Do not use specimens stored for more than 8 hours.
- Mix the specimen thoroughly before testing for 2 minutes with a mechanical mixer or invert the test tube 10 times.
- Use only EDTA or heparin anticoagulants. Do not use iodoacetate, sodium citrate or anticoagulants containing fluoride to avoid inaccurate results.
- Test strips should remain in the closed canister until use.
- High concentrations of triglycerides (> 37 mmol/L) and salicylic acid (> 600 mg/dL) may cause lower hemoglobin measurements.

Read the Results

The meter will display results for Hb and calculated HCT.

After 8 minutes of inactivity, the meter will automatically shut off.



Recall the Results

From the Initial Screen, press ◀ or ▶ to show the first record. Press ◀ or ▶ to view each record in date/time sequence. Press and hold ⏻ to return to the Initial Screen.

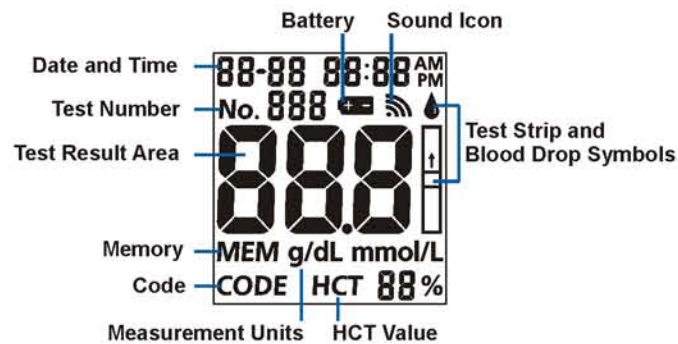


Troubleshooting

Refer to Section 12 Troubleshooting in the User's Manual for details.

7

Meter Display



- Sound Icon:** Appears when the sound is turned on.
- Battery:** Appears when the battery should be replaced.
- Test Number:** Indicates assigned test number.
- Test Result Area:** Indicates test result or displays menu options.
- Memory:** Indicates a test result is being recalled from memory.
- Code:** Indicates the code number of the test strips.
- Measurement Units:** Indicates the units for the test result.
- HCT Value:** Shows calculated Hct value.
- Test Strip and Blood Drop Symbols:** Indicates when to insert test strip or apply specimen.

1

Turn on Meter

To use the meter with batteries, insert 3 AAA batteries (1.5V) into the battery compartment located on the back of the meter. To use the meter with the power adaptor, connect the Mini USB port of the power adaptor to the USB port located on the top of the meter with a USB cable, and plug the adaptor into a 100-240V ac, 50-60 Hz primary power outlet. The meter can also be powered from the USB port of a personal computer, connected by a USB cable.



2

Meter Setup

With the meter turned off, press and hold ⏻ for 4 seconds to enter **Meter Setup** mode shown below. Press ◀ or ▶ to display submodes and press ⏻ to enter the mode.

SET	Test number setup. The test number can be set from 1 to 999.
SET	System setup, including date, time, test number reset, units and sound.
CHK	Optical Check mode. Refer to Section 5 Meter Setup in the User's Manual.
PC	Data Transfer mode. Refer to Section 5 Meter Setup in the User's Manual.
DEL	Memory Delete mode. Refer to Section 5 Meter Setup in the User's Manual.
EXIT	Exit setup modes and save changes when ⏻ is pressed. The meter will automatically return to the Initial Screen.

3

Test Number Setup

From the **No. SET** screen, press ⏻ to enter **Test Number Setup**. The test number can be set to any number from 1-999. Press ◀ or ▶ until the correct test number is displayed. To quickly cycle to the desired test number, press and hold ◀ or ▶. Press ⏻ to save and return to the **Meter Setup** screen.

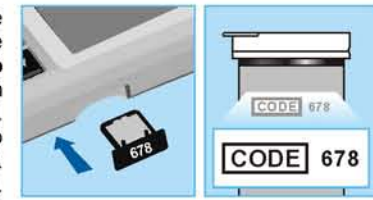
System Setup

From the **SET** screen, press ⏻ to enter System Setup.

- Hour Setup**
Press ◀ or ▶ to switch between the 12 or 24 hour settings. Press ⏻ to save.
- Year Setup**
Press ◀ or ▶ until the correct year is displayed. Press ⏻ to save.
- Month and Date Setup**
The month and date will appear at the top of the display separated by a single dash (-), with flashing month. Press ◀ or ▶ until the correct month is displayed. Press ⏻ to save. The day will flash. Press ◀ or ▶ until the correct day is displayed, then press ⏻ to save.
- Time Setup**
The hour and minutes will appear at the top of the display separated by a colon, with flashing hour. Press ◀ or ▶ until the correct hour is displayed. Press ⏻ to save. **Minutes** will flash. Press ◀ or ▶ until the correct **Minutes** are displayed. Press ⏻ to save.
- Test Number Reset Setup**
Press ◀ or ▶ to turn the test number reset **ON** or **OFF**. The test number will reset to 1 for each new day of testing when the test number reset is turned on. Press ⏻ to save.
- Units Setup**
Press ◀ or ▶ to select either g/dL, g/L or mmol/L. Press ⏻ to save.
- Sound Setup**
Press ◀ or ▶ to select sound either **ON** or **OFF**. The **Sound Symbol** will appear on the display when the sound is turned on. Press ⏻ to save and return to the setup screen. Press ◀ or ▶ until **EXIT** is displayed and press ⏻ to exit setup. The screen will briefly go blank and display the Initial Screen.

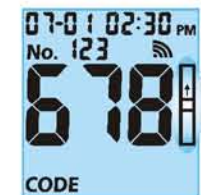
Coding the Meter

Take the **code chip** from the test strip box. Compare the code number on the **code chip** with the code number printed on the test strip canister label. Insert the new **code chip** into the **code chip slot** of the meter. It should easily snap into place. The **code chip** should remain in the meter. Do not take it out until a new box of test strips is needed. The code number will appear on the Initial Screen after startup. Refer to the User's Manual for more details on coding the meter.



Insert Test Strip

The meter will flash the strip symbol.



Insert a test strip into the strip channel in the same direction as the arrows indicated on the strip. Ensure the strip is inserted completely into the strip channel until the white edge in front of the black line on the strip is no longer visible.

Note: Do not remove the test strip from the meter to apply the specimen.



4